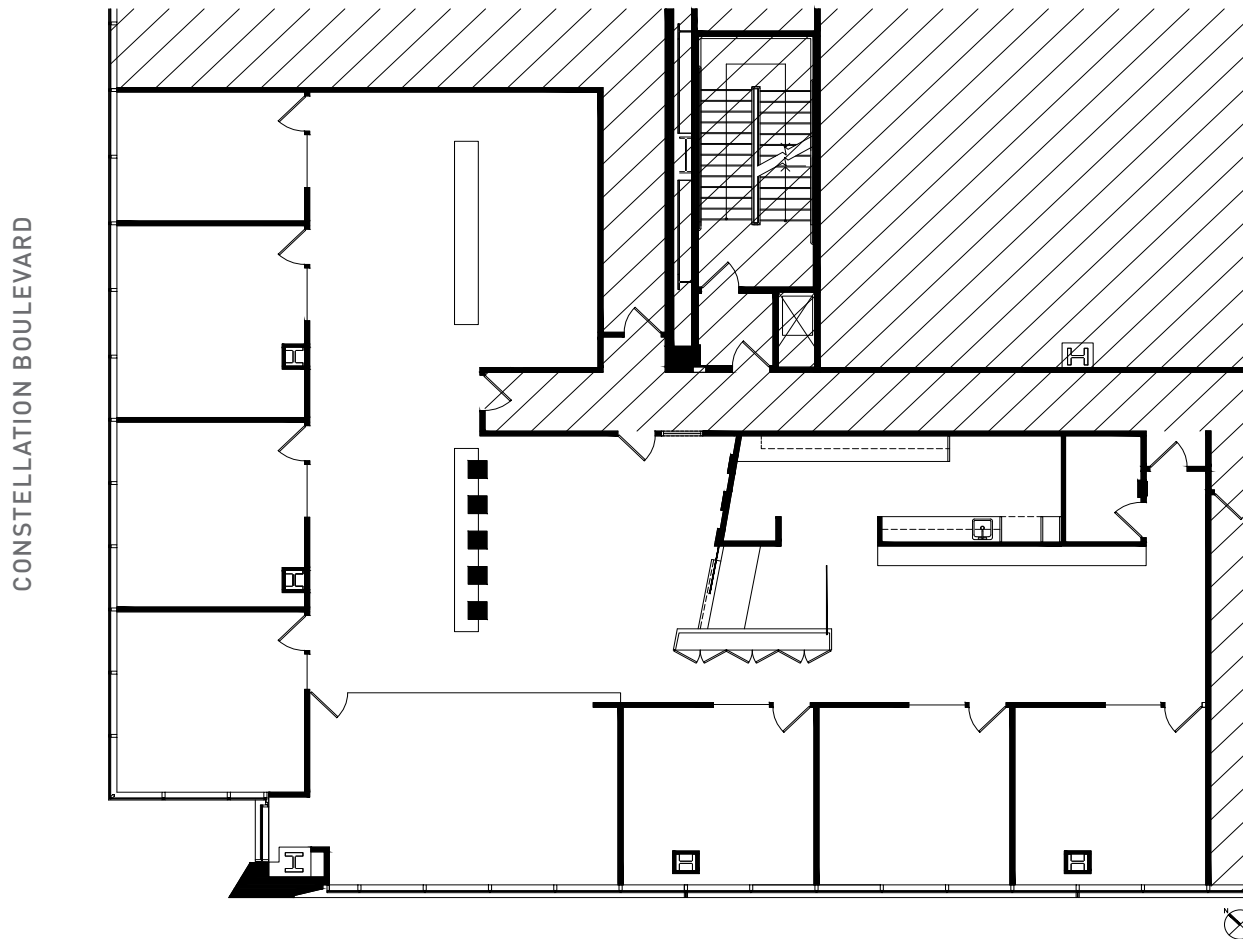


# 2000 AVENUE OF THE STARS

NORTH TOWER, LOS ANGELES

AVAILABLE 07.01.19

CENTERPIECE PARK



CONSTELLATION BOULEVARD

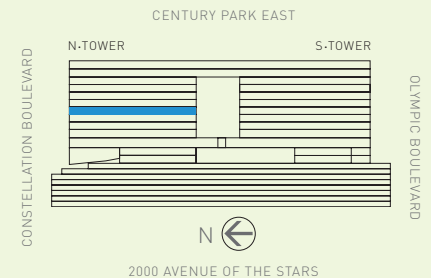
OLYMPIC BOULEVARD

AVENUE OF THE STARS



Floor 6 Suite 620N

5,625 RSF



FOR LEASING, CONTACT:  
CBRE  
310.226.7400  
[www.centurypark.net](http://www.centurypark.net)

TWO THOUSAND



AVENUE OF THE STARS

WHERE THE FUTURE WORKS.