

# CENTURY PARK RETAIL

AMENITY LANE



@centurypark\_cc  
[centurypark.net](http://centurypark.net)

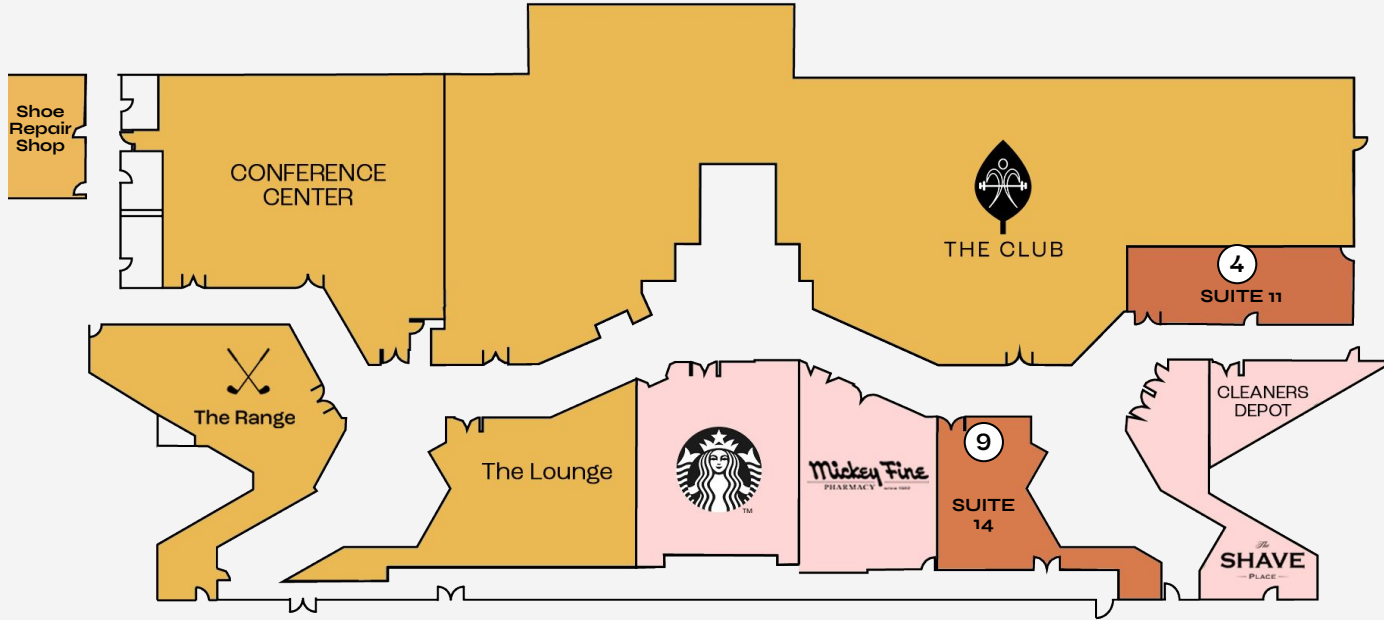
# NEW RETAIL OPPORTUNITIES

## TWO SUITES LOCATED IN AMENITY LANE



Proposed Retail | Suite 14 | 1,356 RSF

Proposed Retail | Suite 11 | 1,264 RSF



**TENANT EXCLUSIVE AMENITIES**

- 1 Shoe Repair Shop
- 2 Conference Center
- 3 The Club Fitness Center
- 5 The Range Golf Club
- 6 The Lounge

**FOOD, BEVERAGE & SERVICES**

- 7 Starbucks
- 8 Mickey Fine
- 10 Cleaner's Depot
- 11 The Shave Place

**AVAILABILITIES**

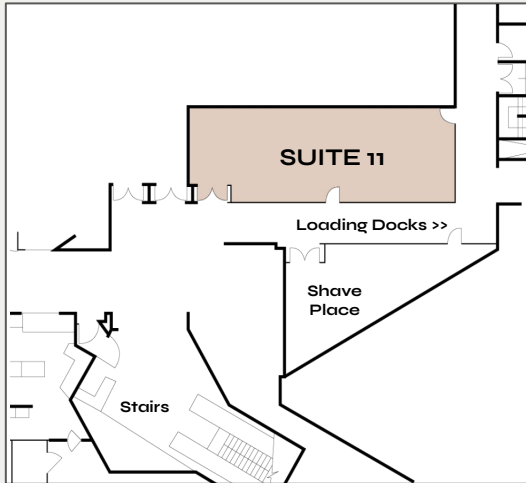
- 4 Suite 11
- 9 Suite 14



# SUITE 11

# PROPOSED RETAIL OPPORTUNITY

1,264 RSF



Virtual Tour Here



HYPOTHETICAL RENDERINGS

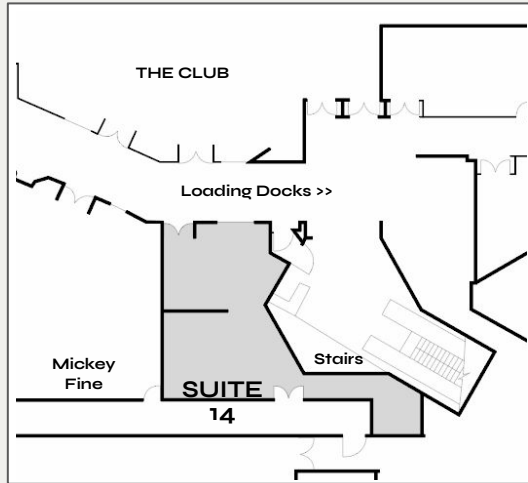


HYPOTHETICAL RENDERINGS

SUITE 14

# PROPOSED RETAIL OPPORTUNITY

1,354 RSF



Virtual Tour Here



CENTURY PARK

# DAYTIME POPULATION

**10,000**

Guests On Property A Day

CBRE



[Watch video of  
Amenity Lane here.](#)



CENTURY PARK

## CENTURY PARK

# PROPERTY DEMOGRAPHICS



**2022**  
Population

1 MILE

26,087

3 MILE

295,116

5 MILE

686,887



**2022**  
Employees

76,744

400,775

603,295



**2022**  
Households

12,777

130,924

310,705



CENTURY PARK



CENTURY PARK

# RETAILERS ON PROMENADE



## CENTURY PARK RETAIL

AMENITY  
LANE

Pat McRoskey  
Managing Director  
pat.mcroskey@cbre.com  
Lisc #00891029  
310.226.7400

Amanda Calof  
Senior Vice President of Leasing  
amanda.calof@cbre.com  
Lisc #01470409  
310.226.7400

Patti Gilbert  
Senior Vice President of Leasing  
patti.gilbert@cbre.com  
Lisc #01169030  
310.226.7400

Demetri Papadakis  
Financial Analyst  
demetri.papadakis@cbre.com  
Lisc #02073908  
310.226.7429

[Centurypark.net](http://Centurypark.net)



2000 Avenue of the Stars



@centurypark\_cc

