

2000 Avenue of the Stars

Suite 60

◆ ◆ ◆



centurypark.net

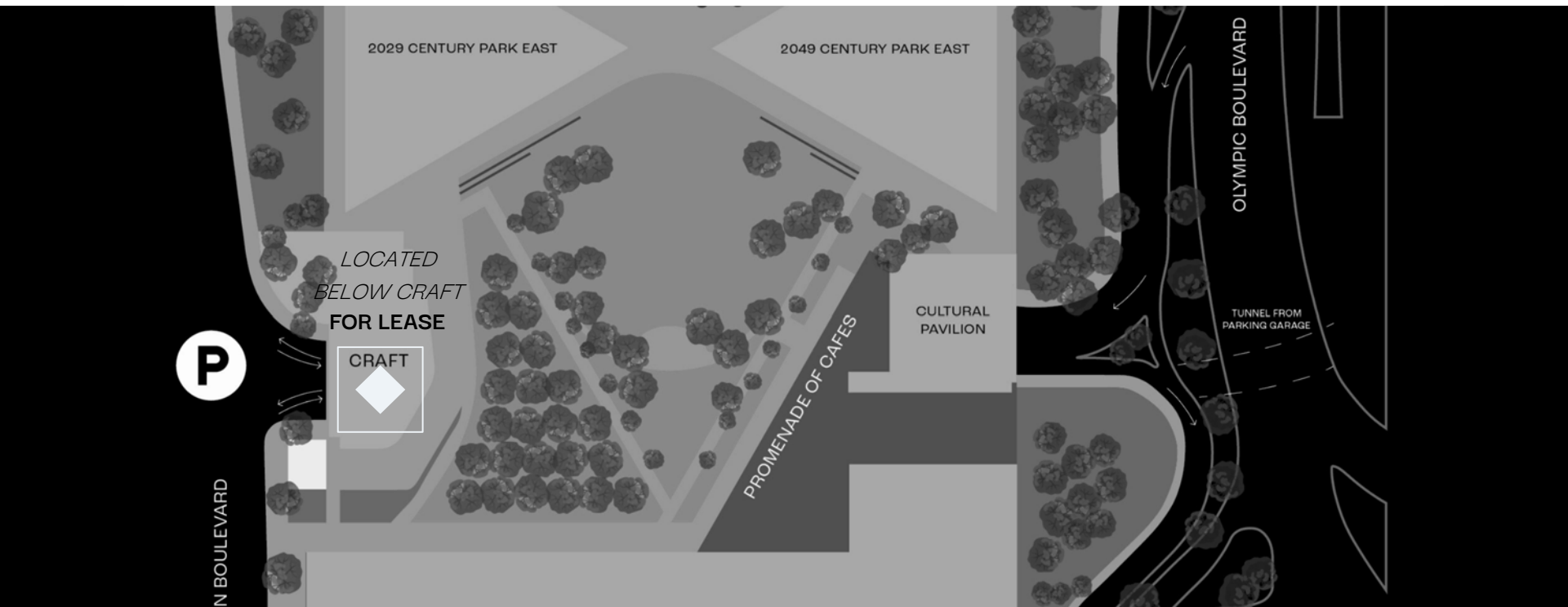
Existing at the intersection of finance, entertainment and influence, 2000 Avenue of the Stars redefines the average office as a lifestyle destination.

Home to top entertainment, financial and law firms, 2000 Avenue of the Stars is a modern, energy efficient, mixed-use space that co-exists with exclusive office, retail, restaurant and unparalleled amenities.

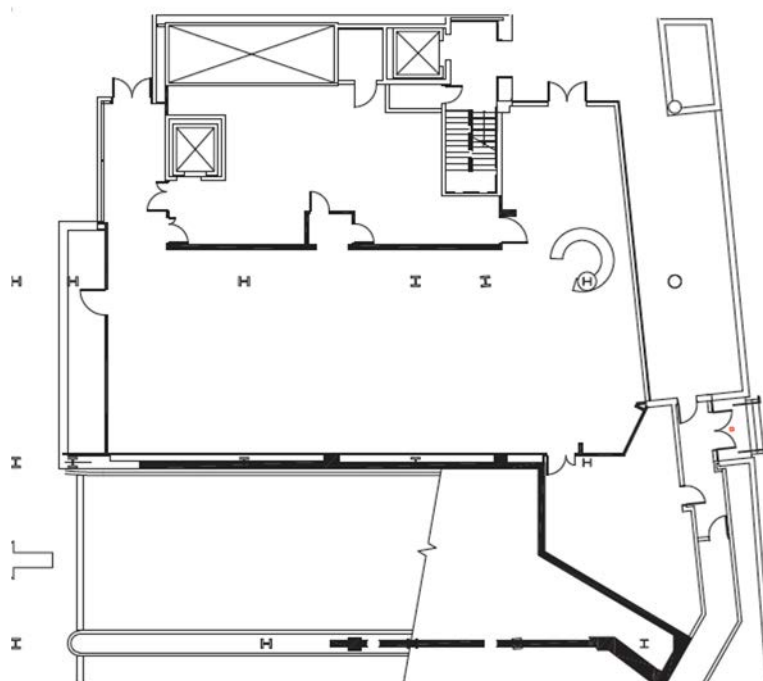
All wrapped in glass and steel blurring the lines between inside and out, 2000 Avenue of the Stars tenants understand that the sky's the only limit here.



Location



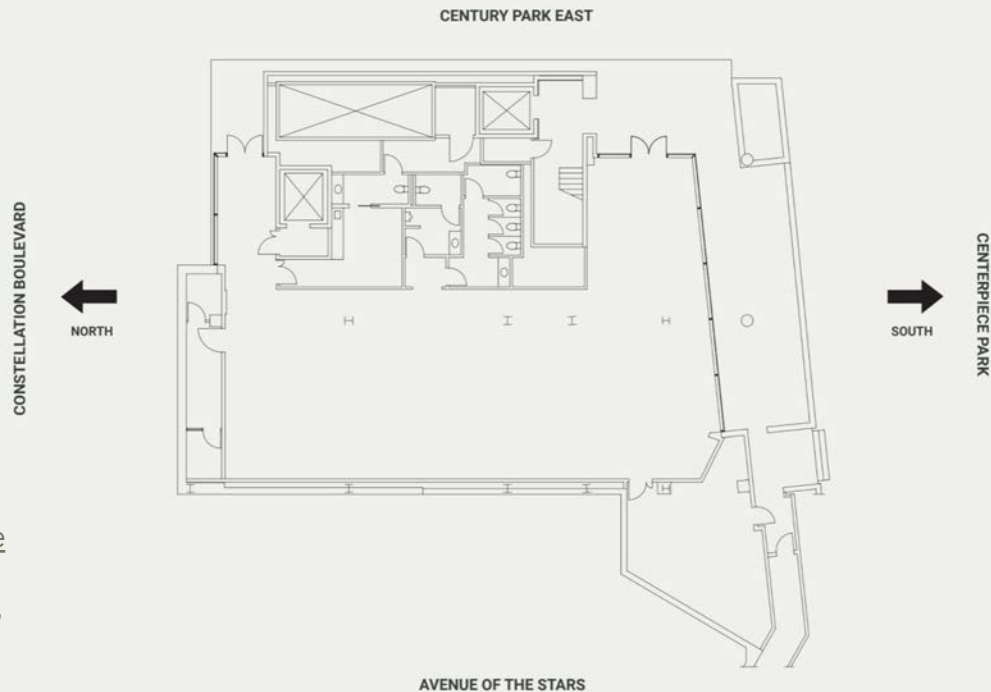
Floor Plan



[Virtual Tour Here](#)

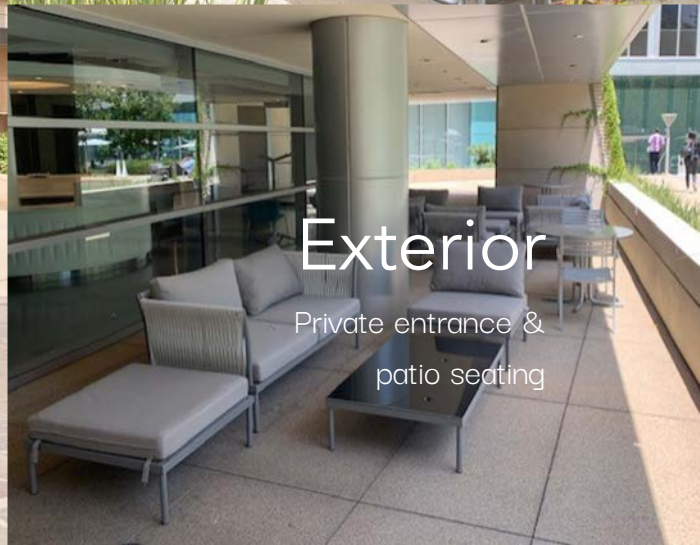
Approx. **4,594 RSF**

Floor Plan



[Virtual Tour Here](#)

Approx. **4,594 RSF**



Exterior
Private entrance &
patio seating



CENTURY PARK

Interiors

Office space & lobby

Century Park

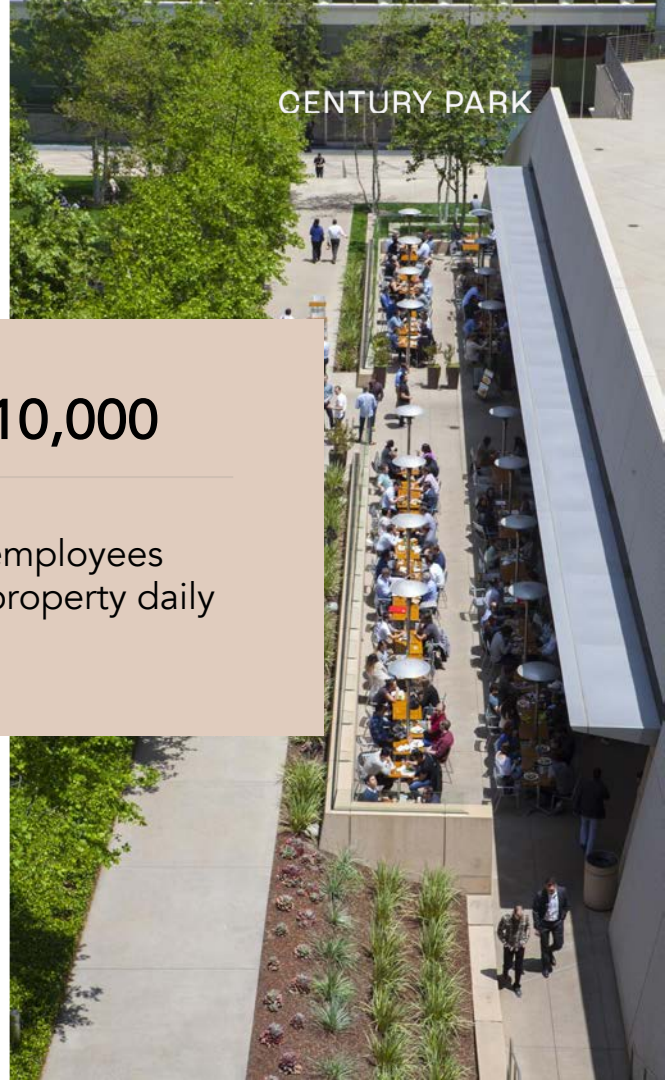
Daytime Population

▶ [Watch video of Amenity Lane here](#)

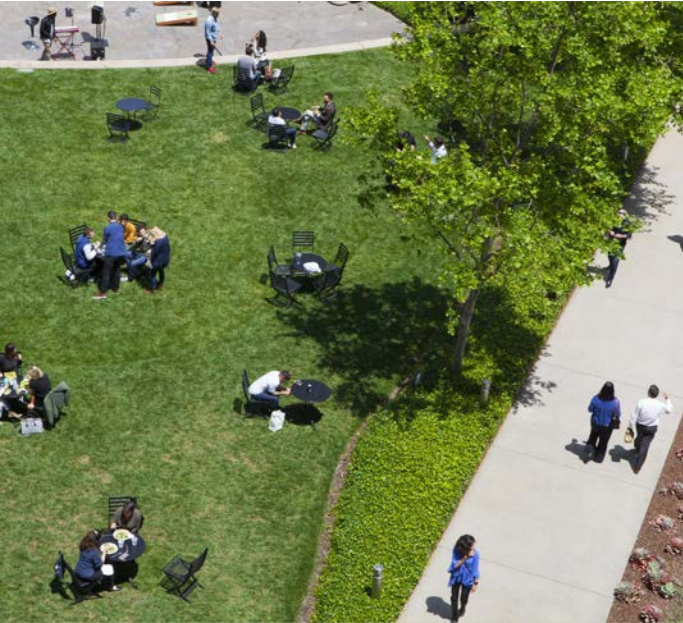
10,000




employees
on property daily

CENTURY PARK



Property Demographics



	1 MILE	3 MILE	5 MILE
 2020 POPULATION	24,955	295,222	695,479
 2020 EMPLOYEES	70,938	386,739	578,632
 2020 HOUSEHOLDS	12,250	133,583	312,309

Retailers on The Promenade



Mickey Fine

Piknic

MENDOCINO FARMS
sandwich market

Cuvée

craft
LOS ANGELES

Featured Tenants

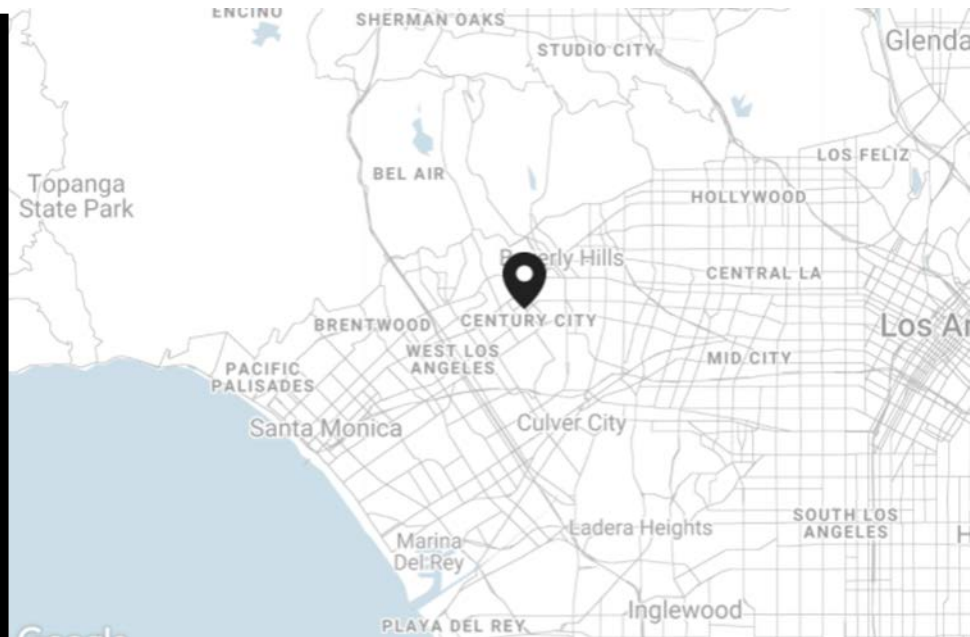


How to Get Here

CENTURY PARK

2029-2049 Century Park East

Los Angeles, CA 90067



2000 Avenue of the Stars

Suite 60



Pat McRoskey | Managing Director

pat.mcroskey@cbre.com

Lisc #00891029

310.226.7400

Patti Gilbert | Senior Vice President of Leasing

patti.gilbert@cbre.com

Lisc #01169030

310.226.7400

Amanda Calof | Senior Vice President of Leasing

amanda.calof@cbre.com

Lisc #01470409

310.226.7400

Demitrius Papadaki | Advisory & Transaction Services

demetri.papadakis@cbre.com

Lisc #02084345

310.226.7429

centurypark.net
